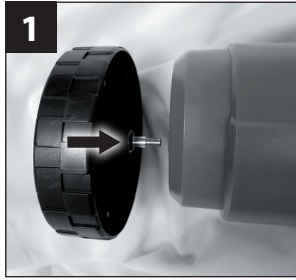




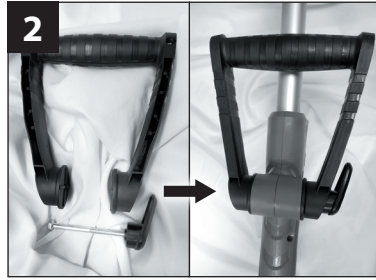
Grout Groovy!

ASSEMBLY GUIDE AND USER MANUAL

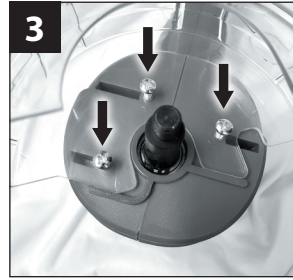
5 STEP QUICK ASSEMBLY - GO TO WWW.GROUTGROOVY.COM FOR HOW-TO VIDEOS.



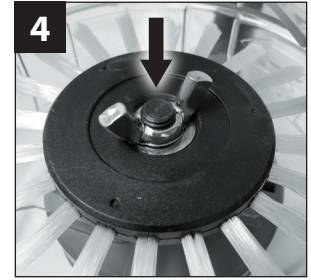
1) **Guide Wheel** – attach guide wheel using phillips screwdriver.



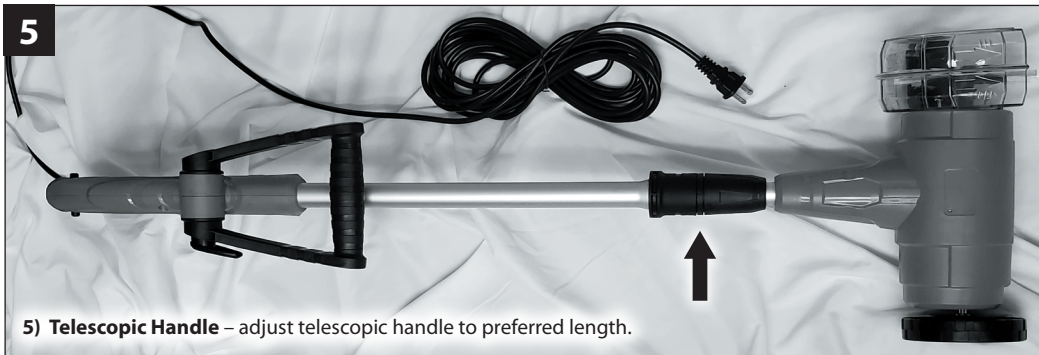
2) **Adjustable Handle** – attach adjustable handle with long bolt provided.



3) **Splash Guard** – attach splash guard with 3 screws provided.



4) **Brush Wheel** – attach brush wheel using wing nut provided.



5) **Telescopic Handle** – adjust telescopic handle to preferred length.



**NEED HELP?
GO TO:
GroutGroovy.com
for assembly &
how-to videos.**

7 STEP QUICK START - HOW TO USE

- 1) **Apply a simple soap and water** mixture to a small area of grout using a spray bottle, mop or sponge and let it sit for at least 10 minutes. For heavier stains use your preferred grout cleaning product.
- 2) **Plug Grout Groovy** into a 120v power source
- 3) **Depress the operating handle** on the top of the machine

- 4) **As the cleaning brush rotates**, let it rotate and scrub the grout line and move it back and forth until dirt is removed (keep hands and feet away from rotating brush)
- 5) **There is no need to apply pressure** – the spinning wheel does all of the work to clean grout – (when a small area is cleaned release the operating handle until the cleaning brush stops rotating)

- 6) **Mop up and dry** the small area that has been cleaned before moving to another area – (*do not stand in water while using the machine*)
- 7) **Use a small grout brush** for areas close to cabinets, walls and appliances to complete the cleaning process

IMPORTANT SAFETY INSTRUCTIONS

When using an electrical appliance, basic precautions should always be followed, including the following: **READ ALL INSTRUCTIONS BEFORE USING THIS APPLIANCE**

WARNING – To reduce the risk of fire, electric shock, or injury:

- a) Do not leave appliance when plugged in. Unplug from outlet when not in use and before servicing.
- b) Do not use outdoors
- c) Do not allow to be used as a toy. Close attention is necessary when used by or near children.
- d) Use only as described in this manual. Use only manufacturer's recommended attachments.
- e) Unplug before connecting brush.
- f) Do not pull or carry by cord, use cord as a handle, close a door on cord, or pull cord around sharp edges or corners. Do not run appliance over cord. Keep cord away from heated surfaces.
- g) Do not unplug by pulling on cord. To unplug, grasp the plug, not the cord.
- h) Do not handle plug or appliance with wet hands.
- i) Do not put any object into openings. Do not use with any opening blocked; keep free of dust, lint, hair, and anything that may reduce air flow.
- j) Keep hair, loose clothing, fingers, and all parts of body away from openings and moving parts.
- k) Turn off all controls before unplugging.
- l) Use extra care when cleaning on stairs.
- m) Do not use to pick up flammable or combustible liquids, such as gasoline, or use in areas where they may be present.
- n) To Reduce the Risk of Fire, do not use a flammable or combustible liquid to clean a floor.
- o) This appliance is provided with double insulation. Use only identical replacement parts. See instructions for Servicing of Double-Insulated Appliances.
- p) Do not use with damaged cord or plug. If appliance is not working as it should, has beendropped, damaged, left outdoors, or dropped into water, return it to a service center.
- q) Do not use with an extension cord.

SAVE THESE INSTRUCTIONS.

SERVICING OF DOUBLE-INSULATED APPLIANCES

In a double-insulated appliance, two systems of insulation are provided instead of grounding. No grounding means is provided on a double-insulated appliance, nor should a means for grounding be added to the appliance. Servicing a double-insulated

appliance requires extreme care and knowledge of the system, and should be done only by qualified service personnel. Replacement parts for a double-insulated appliance must be identical to the parts they replace. To reduce the risk of electric shock, this appliance has a

polarized plug (one blade is wider than the other). This plug will fit in a polarized outlet only one way. If the plug does not fit fully in the outlet, reverse the plug. If it still does not fit, contact a qualified electrician to install the proper outlet. Do not change the plug in any way.

NEED HELP? GO TO WWW.GROUTGROOVY.COM FOR ASSEMBLY & HOW-TO VIDEOS.